

Mistry, Natasha (MTO)

From: Lively, Jacqueline (MTO)
Sent: June-15-16 4:47 PM
To: Collenette, David (MTO)
Cc: Amirali, Abid (MTO); Manna, Lindsay (MTO)
Subject: Hydro Corridor intersection with existing track
Attachments: KW London Corridor Map - Hydro Corr. inclu..docx; Hydro Corridor - KW to Windsor.docx

Hi David,

Apologies for missing this – when I initially reviewed the corridor map, I did think that the hydro corridor intersected with GEXR, which is the white line that you thought it intersected with on our KW-London Map.

After further review, it does not appear to intersect with the GEXR near London. Rather it intersects with the following:

- The **red** CP line that is east and north of London; and,
- The **green** CN line, which goes into the London VIA station - the intersection with hydro is closer to the city, east and slightly south.

Please see the attached revised map, which includes a rough alignment of the hydro corridor in black and the intersection points. Perhaps we can confirm this with MOE tomorrow as a follow-up question.

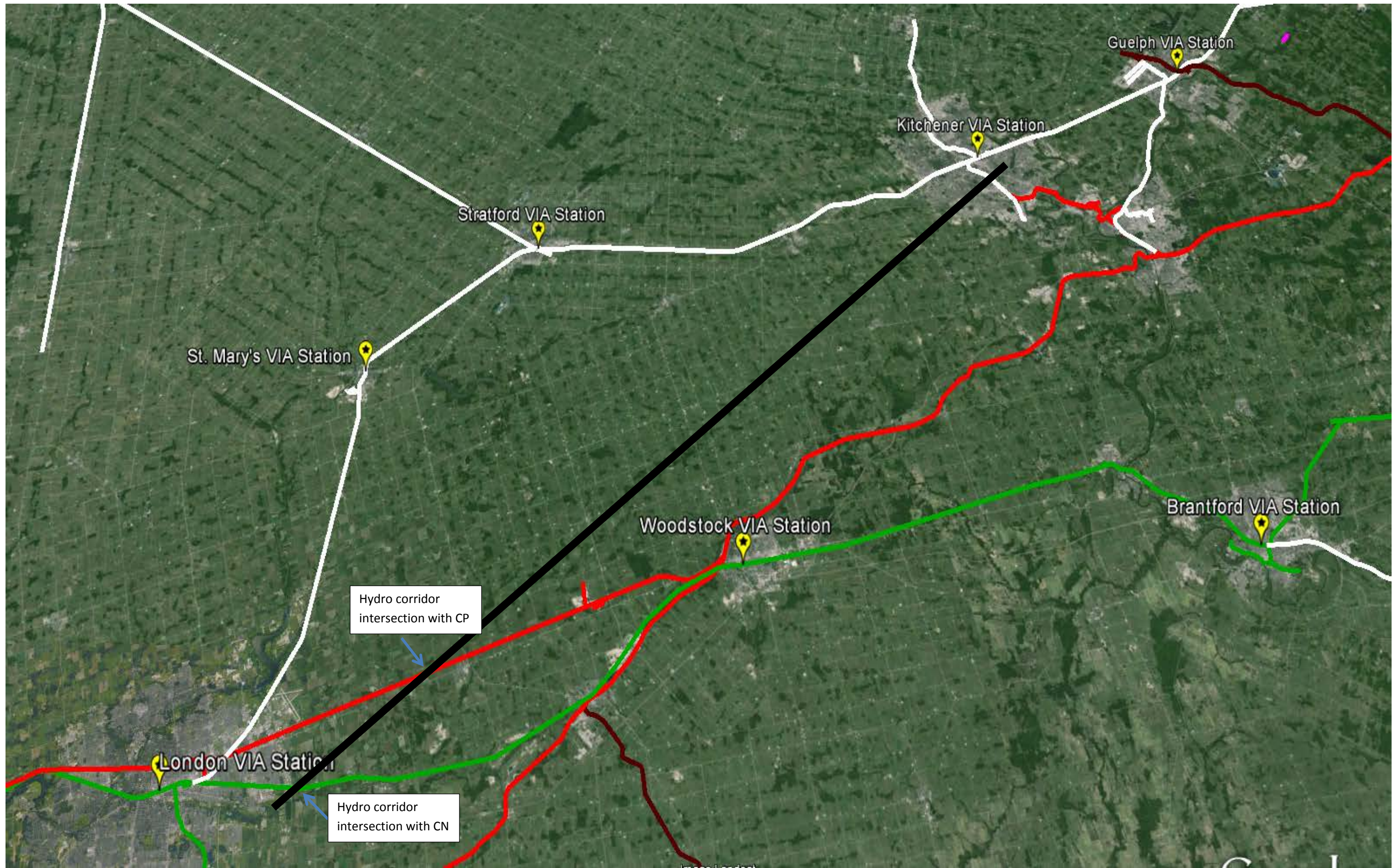
The implications of this for our thinking is that it might change how much we can use of the existing ROW on the hydro corridor for new build, *if* we want HSR to connect with the white GEXR line that enters London from the North.

Please let me know your thoughts and if you have any other questions. I am continuing to research this online, although there doesn't appear to much available on hydro/rail line intersection on google.

Thank you,

Jackie

Jacqueline Lively | Senior Policy Advisor
Office of the Special Advisor for High Speed Rail
Transportation Policy Branch | Ministry of Transportation
T: 647-539-2841 | E : jacqueline.lively@ontario.ca





- 500 kV Line
- 230 kV Line
- 150 kV Line

